

## TABLE OF CONTENTS

### • ROTARY AXIS

### • ARCHITECTURAL METAL SCREENS

- Decorative Interior Metal Wall
- Decorative Exterior Metal Wall
- Building Louvers
- Building Facades



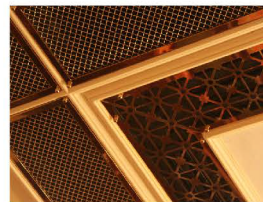
[www.crosstownmetal.com](http://www.crosstownmetal.com)



INTERIOR



EXTERIOR



LOUVERS



FACADE



5-AXIS CUTTING  
DEMO



OVERVIEW:  
MATERIALS CUT



ADAPTING FILES  
FOR WATERJET

## ROTARY AXIS

### A-JET

The The A-Jet is a completely software-controlled multi-axis cutting head that greatly expands the versatility of the OMAX JetMachining Center.

With a cutting range from 0° to 60°, the A-Jet can easily cut beveled edges, angled sides, and countersinks. Advanced features in the Intelli-MAX Software Suite allow the A-Jet to compensate for taper and easily create complex 3D shapes.

With its inherent high level of positioning accuracy, the A-Jet is capable of cutting parts that require no secondary finishing, significantly reducing part production time.

### Benefits & Features

- Eliminates secondary machining and grinding for fabrication processes, ideal for common welding projects.
- Easily creates countersinks and weld-ready edges.
- Precision angular motion can create unique 3D parts
- Fully automatic taper compensation to minimize taper on finished parts
- OMAX-unique High Angle Fusible Mixing Tube protects precision mechanism
- Cutting angle ranges from 0° to 60°
- Three modes of taper compensation supplied with a MAXJET 5i Nozzle, which includes an OMAX High Angle Fusible Mixing Tube
- Designed for high flow/high power abrasive waterjet applications with multiple pumps by using large diameter tubing with minimal pressure loss
- Features a fixed focal point design, where the XYZ axes do not need to move as the head tilts





A-JET

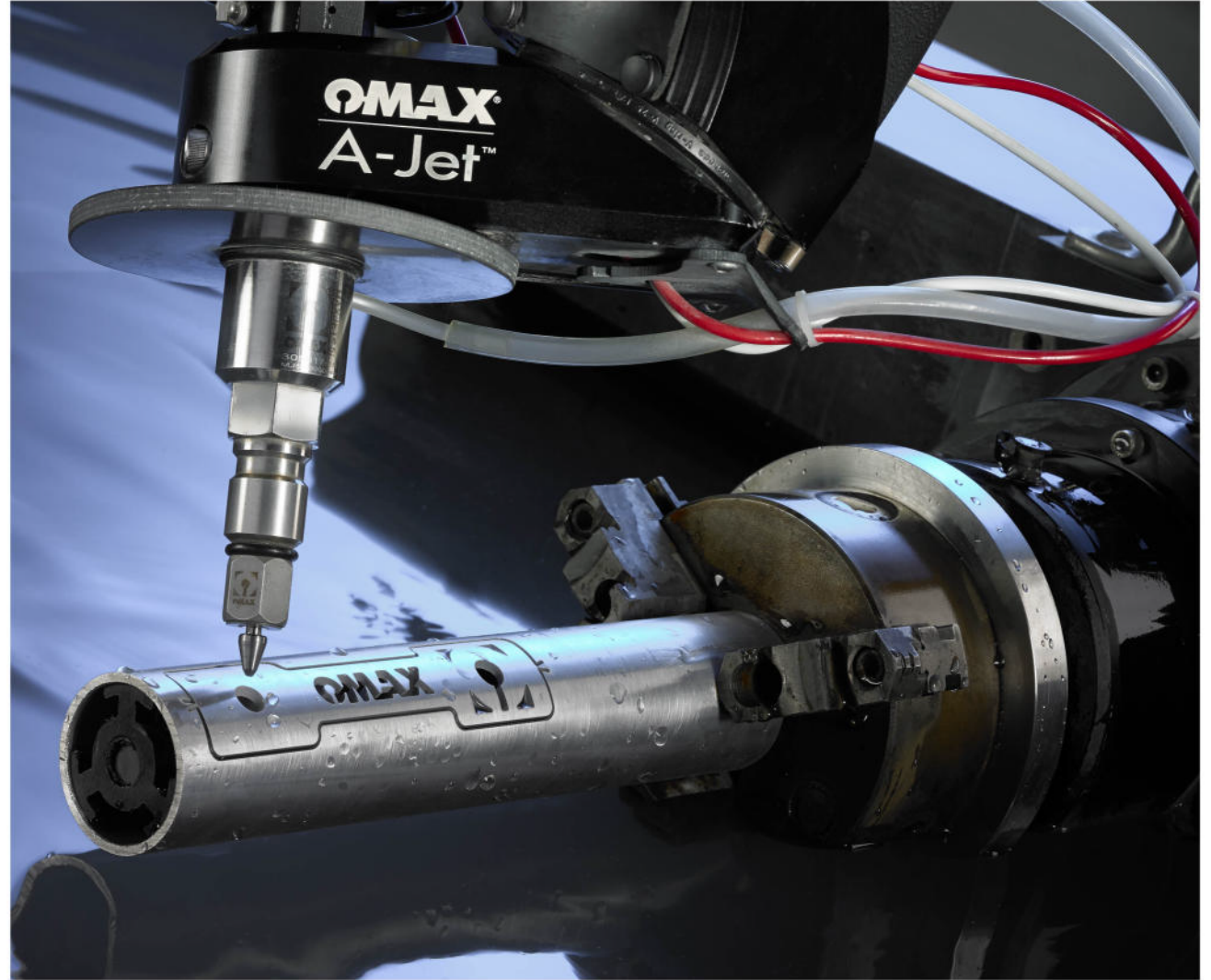
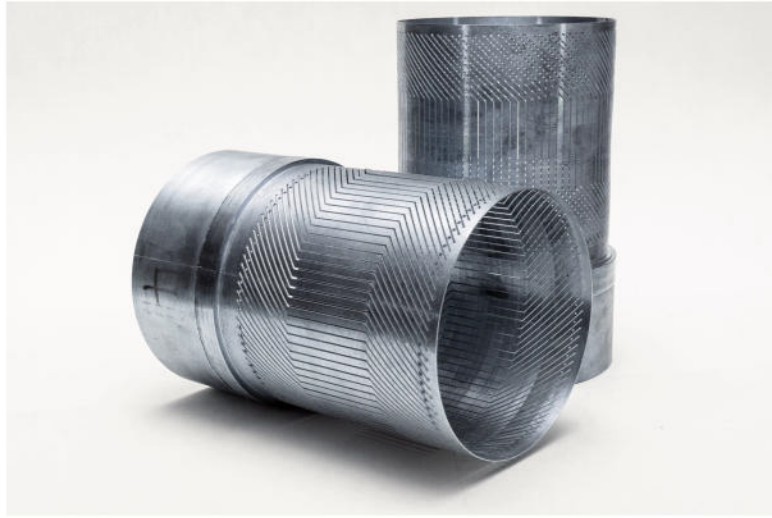


Figure 01



Figure 02



Figure 03



Figure 04





Figure 05



Figure 06



Figure 07



Figure 08



Figure 09



Figure 10



Figure 11



Figure 12

